



Open Data in Gent

The importance of connecting with local communities

Smart City Exhibition
October 24th
Bologna

Thimo Thoeye
thimo.thoeye@gent.be



1984



2014



Open Data Policy

- **Stimulating re-use**
- **Co-creation**
- **Inclusion**
- **Peer learning**

Parking facilities

```
- parkings: [  
  - {  
    timestamp: 1414094813217,  
    name: "P01",  
    description: "Vrijdagmarkt",  
    address: "Vrijdagmarkt 1,<br>9000 Gent",  
    contactInfo: "Tel.: 09 266 29 00 <br> (permanentie)<br>  
    openingHours: "24/24 open",  
    open: true,  
    full: false,  
    suggestedRGB: "#00ff00",  
    totalCapacity: 642,  
    availableCapacity: "177",  
    latitude: 51.057,  
    longitude: 3.726,  
    covered: true,  
    + activeRoute: [...]  
  },
```

<http://data.gent.be>

Stimulating re-use



<http://www.appsforghent.be>

Stimulating re-use



<http://www.coderdojobelgium.be>

Stimulating re-use



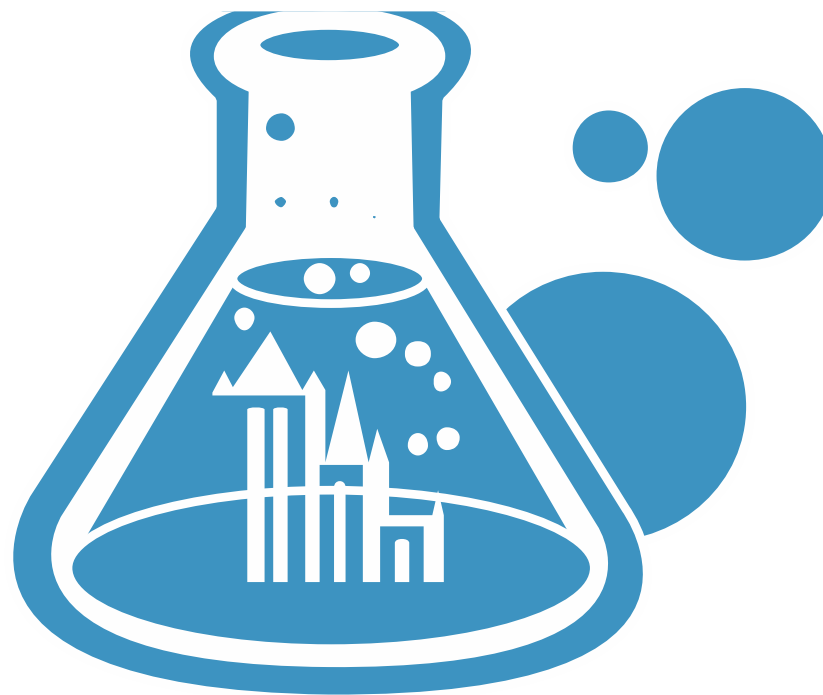
<http://www.summerofcode.be>

Stimulating re-use



Guest lectures

Co-creation



<http://www.ghentlivinglab.be>

Historical city centre



Mobility disaster



Improved data

```
- activeRoute: [  
  - {  
    longitude: "51.06733",  
    latitude: "3.727"  
  },  
  - {  
    longitude: "51.06316",  
    latitude: "3.72539"  
  },  
  - {  
    longitude: "51.06178",  
    latitude: "3.72458"  
  },  
  - {  
    longitude: "51.05955",  
    latitude: "3.72498"  
  },  
  - {  
    longitude: "51.057",  
    latitude: "3.72835"  
  },  
  - {  
    longitude: "51.05635",  
    latitude: "3.72819"  
  },  
]
```

Inclusion



“Apps 4 Dummies”

Peer learning



“Citizen’s Academy”

The future

- **Expand target group**
- **Up-skill potential users**
- **Improve internal processes**
- **Publish more data**

The future

NUMBER OF PLACES **0** NUMBER OF DATASETS **0** NUMBER OF OPEN DATASETS **0** PERCENTAGE OPEN **NAN%**

Key: ■ Yes ■ No ■ Unsure ■ No data

[+ Contribute data to the Census!](#)

Sort
 alphabetically
 by score

Real-Time Transit Annual Budget Expenditure (detailed) Election results Air Quality Transport Timetables Public Facilities Crime statistics Procurement contracts Food safety inspections Traffic accidents Building permits Service Requests Business Permits Business Listings Total Score

The Census Admin needs to add some places to the Places configuration sheet

Sort
 alphabetically
 by score

Real-Time Transit Annual Budget Expenditure (detailed) Election results Air Quality Transport Timetables Public Facilities Crime statistics Procurement contracts Food safety inspections Traffic accidents Building permits Service Requests Business Permits Business Listings Total Score

Key: ■ Yes ■ No ■ Unsure ■ No data

<http://be-city.census.okfn.org/>

